

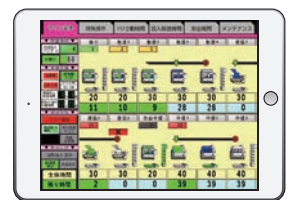
# Tea flow TFL-5A~14A



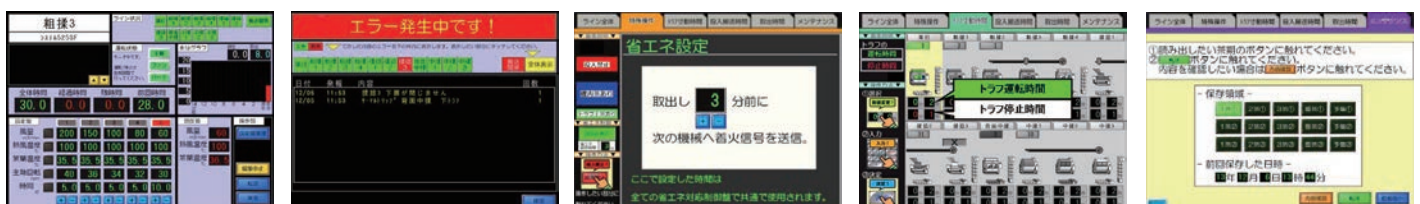
## Monitor/manage the tea manufacturing state from each machine till transporting by linking with machine control panel.

- Line monitoring system which is closer to FA (Factory automation) supports overall tea manufacturing.
- With the large LCD touch panel, tea state can be checked at glance & improved the operability.
- When select a machine from display, switches to control panel display set value, current value can be checked & changed on Tea flow. (※Possible with both direction networking control panel.)
- Each control panel set value saving & recalling is possible. Set value saving is possible in 15 ways dividing to tea season.
- When occur error in transport equipment & each control panel, shows error content & informs with alarm.
- Line state information can be shared by installing several displays in factory & office etc. By using tablet device etc. can gain from a long distance.
- Tea flow 1 unit can respond to 5~14 tea machines.

ライン全体	特殊操作	トラフ寸動時間	投入搬送時間	取出時間	メンテナンス
ライン稼働率	4	3	2	1	
稼働中	88				
異常発生					
異常発生	13/17/15				
異常発生	18				
異常発生	28				
エラー確認	稼働2	稼働3	青巾中稼	中稼1	中稼2
稼働率	31			30	
稼働率					
稼働率					
稼働率					
全体時間	30	30	20	40	40
残り時間	2	0	0	39	39



Tea flow tablet



### Each control panel individual display

It is easy to operate since individual display is same design as each machine control panel. Set value changing is both directions network which can also process from tea flow.  
※1

### Error display

Proper response is possible since shows error content & position when occur error in transport equipment & each control panel.

### Energy saving control

Instructs energy saving controlling if the machine control panel is energy saving correspondent type. If the next process machine is on energy saving controlling, starts warming up of next process machine in most suitable timing before discharging.

### Transporting device inching time setting

Clears tea stuck, spilling & insufficient transporting by setting transporting equipment run time in seconds when discharging & inputting each machine.

### Save, recall, transfer set value

Set value of Tea flow including each control panel can be saved & recalled. Set value saving is possible in 15 ways dividing to each tea season. Saved set value can be transferred to each control panel.

※1.Required both Tea flow & machine control panel both direction network usage.

※Part of the specifications might be changed for improvement.

# System 525 SYS-525

Control panel pursued quality tea manufacturing & ease of use pulling out tea machine performance.

- Each type operability has improved largely since can be displayed freely with LCD touch panel.
- Tea process can be selected from 2~5 steps & fuzzy control, can be changed according to leaf state & season. (※1)
- Used large button for shaft, fan, burner operation focusing safety & operability.
- System 525 operation is easy since design of display is common in each machine.
- Used a multicolor LED to upper front, error shows using color, can catch the state from far.
- SHITORI (Moisture) value, tea temperature & exhaust temperature change shows from previous 14min, helps to catch tea manufacturing state.
- Whole line energy saving mode is possible in addition to efficient energy saving control. (※2)



SYS-525S (For primary tea rolling dryer)

※1 Step setting is not possible in tea machine not using SHITORI (Moisture meter), fuzzy control selecting in tea scattering dryer, continuous type tea scattering dryer.

※2 Energy saving mode is Terada original energy saving by controlling waiting machine fuel consumption monitoring whole line & not affecting tea quality.



**SYS-525SS**  
For continuous tea scattering dryer

Controls air rate as to keep air rate, hot air temperature, main shaft, tea temperature setting, discharging moisture stable. Shows holding tea amount by main shaft value & moisture value in graph.



**SYS-525HEL**  
For Scattering/Wide primary tea rolling dryer

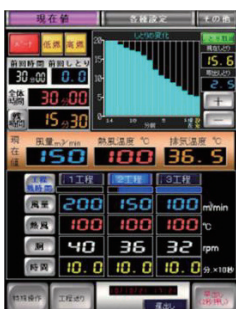
Automatically operates air rate, hot air temperature, tea temperature, main shaft, process time setting, discharging moisture 2~5step setting. Measures moisture & controls air rate.



**SYS-525S, SC**  
For Primary tea rolling dryer/Fixed body type secondary tea rolling dryer

Air rate, hot air temperature setting, tea temperature, main shaft, process time can be selected from 2~5 step & fuzzy control. Measuring leaf moisture & controlling air rate & can be discharged automatically when reach target moisture value.

Controls hot air temperature as to become set tea temperature.



**SYS-525C**  
For secondary tea rolling dryer

Air rate, hot air temperature setting, tea temperature, main shaft, process time can be selected from 2~5 step & fuzzy control. Measuring leaf moisture & controlling air rate & can be discharged automatically when reach target moisture value.

Can be selected & used exhaust temperature & hot air temperature controlling



Fuzzy control display



Control setting switching display

Process steps, fuzzy control selecting display. Process SHITORI (moisture) discharging & late discharging setting.



LED light setting display

Display of machine operation state according to color of multicolor LED.

※Part of the specifications might be changed for improvement.

**TERADA** 株式会社 寺田製作所  
TERADA SEISAKUSHO CO.,LTD.

No.869-1 Ushio Shimada-shi Shizuoka-ken 428-8502 Japan  
Phone : +81-547-45-5111 Fax : +81-547-45-5110  
<https://www.web-terada.jp> E-mail:info@web-terada.jp

● Sales agent

