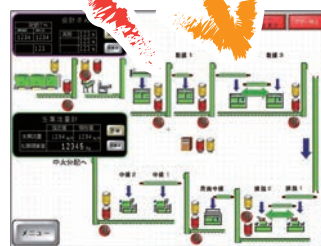


Supports/analyzes by visualizing machine operation information



Factory central monitoring system
"Tea manager"



FA (Factory automation) system

Monitors whole factory from fresh leaf receiving to tea shipping by linking "tea manager" with "kaikei-san". Processes manufacturing process management, efficiency, processing time, predicting the quantity etc. And by managing machines maintenance & guessing transportation troubles, not only informs with alarm when error occurs, sends a message to PC & smart phone.



"Tea flow" system



Each type control panel



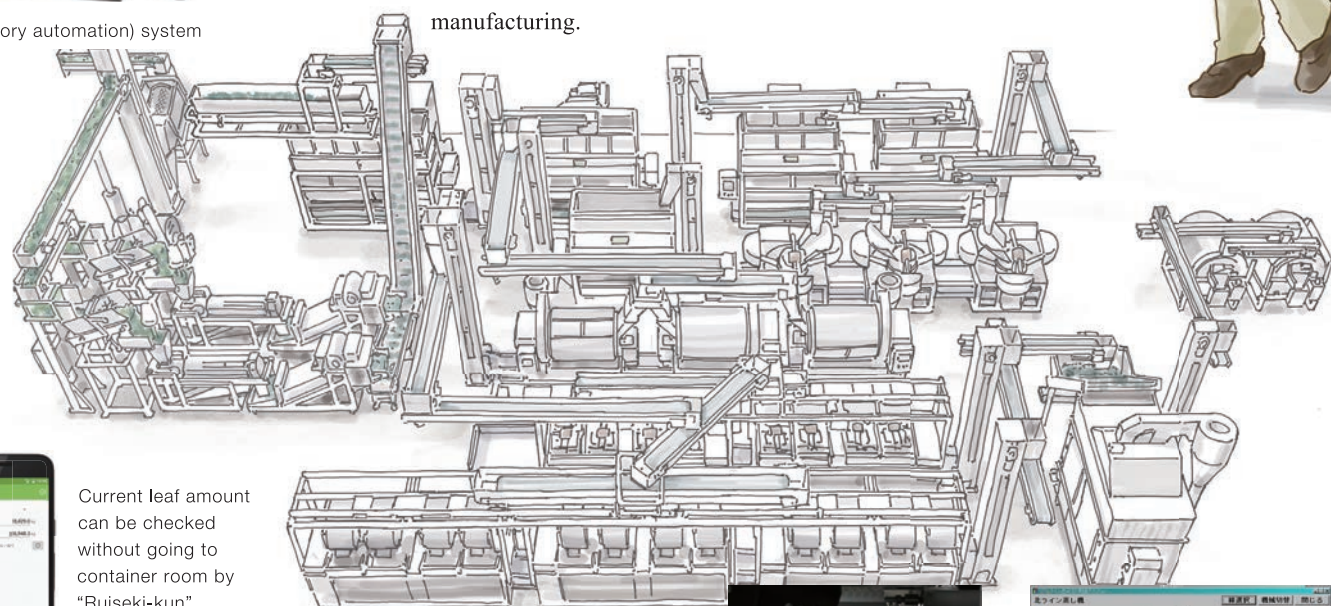
Moisture meter



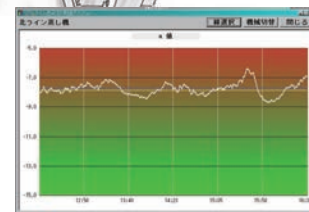
Tea flow tablet

Links each controlling devices

In tea flow & FA system, controls by analyzing most suitable tea manufacturing conditions, with data from kaikai-san. Set value is recorded leaf & lot wise, past values can be referred & by analyzing can be useful for future manufacturing.



Current leaf amount can be checked without going to container room by "Ruiseki-kun"



Not only the moisture, but with the manufacturing tea leaf image & color, predicts & controls tea manufacturing conditions which helps to improve & balance product quality.

By linking with dealer or customer shows in "Kaikai-san" by feedbacking amount, price, evaluation. By centralizing cultivation, manufacturing, product information, visualize whole information targeting quality managing, operation efficiency. Our target is to make useful the daily accumulated data for smart-agriculture future.

TERADA

SMART-AGRICULTURE FOR GREEN TEA

TERADA 株式会社 寺田製作所
TERADA SEISAKUSHO CO.,LTD.

No.869-1 Ushio Shimada-shi Shizuoka-ken 428-8502 Japan
Phone : +81-547-45-5111 Fax : +81-547-45-5110
<https://www.web-terada.jp> E-mail:info@web-terada.jp

●Sales agent



Connecting, visualizing, opening, bright *near* future of tea industry by TERADA

Generally, most of the process from tea farm, factory to product shipping is done by experienced people manually. And gathering manpower, reducing workload has become a major issue for the government.

Terada imaging future of tea industry is to target profitable management by improving production efficiency, stabilization & quality including AI prediction by visualizing, accumulating, analyzing data with agricultural IoT power.

茶畑日誌

Tea garden diary for iOS/Android



It is an application which can be automatically link with tea factory total management system “Kaikai-san” through cloud (Net) by collecting, managing data like tea field position, variety, soil, plucking, pest control, fertilizer applying, field work, using machine information etc.

In future instructs most suitable work process through “Tea garden diary” by inputting data automatically from tea field managing machines including robots with the feed backs of cultivation, production, orders from dealers & management prediction.



Satellite positioning system



Robot fertilizer applying machine
At Horiguchiseicha smart consortium

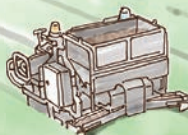
Field container carrier



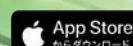
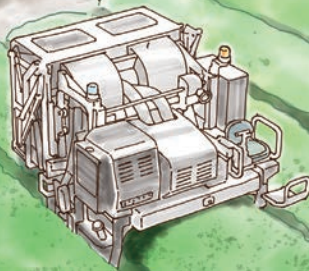
Drone for agriculture



Robotic tea farm management machine



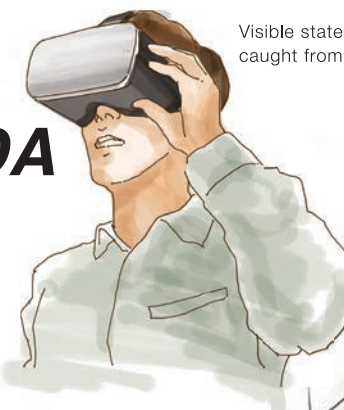
Robotic tea harvester



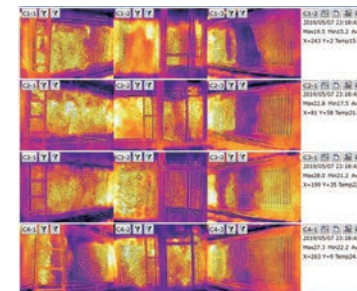
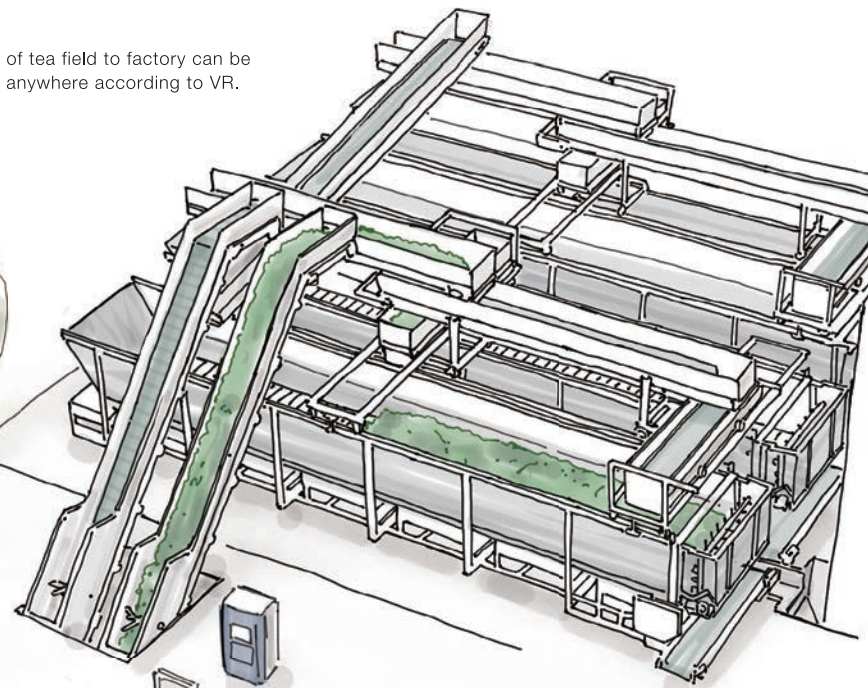
※Tea garden diary app can be downloaded for free. (Japan only)



Field observation network system



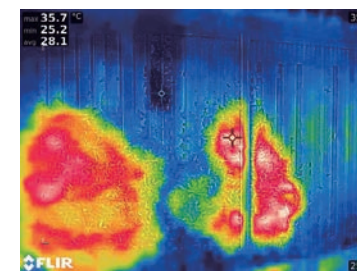
Visible state of tea field to factory can be caught from anywhere according to VR.



Fresh leaf container temperature monitoring system

To keep the tea leaf freshness longer till manufacturing, monitors whole container temperature with thermography, informs with alarm if increases & prevents leaf burnt by cooling that area.

And valid for withering controlling for black tea & semi-fermented tea manufacturing.



Fresh leaf receiving container temperature monitoring system

By monitoring tea leaf temperature when receiving, prevents leaf burnt according to the heat while transporting to factory.



Fresh leaf analyzer LJM-2

Analyze internal components of tea leaf, links with “Kaikai-san” & helps for leaf evaluation.

Helps for future tea field management by linking evaluation with plucked tea field work data & analyzed.

会計さん

Fresh leaves weighing & accounting system

Kaikai-san structured with 1. Weighing & settlement system 2. History management system 3. Fresh leaf analyzing system 4. Tea sales system 5. Labor management system has become the key for smart agriculture of tea industry including field information with tea garden diary & system inside tea factory by accumulating data, managing & instructing.

Analyzes the cultivation, plan the producing capacity wise plucking according to the tea field management information by tea garden diary, field observation by EC net & information from network system & weather information therefore high quality,

high yield, high profit production is possible with reducing workload.

